



Welcome!

We've transformed our corporate home into a showcase of sustainable products and strategies. This pamphlet highlights the full range of steps we took to achieve LEED®-CI Platinum certification, the US Green Building Council's highest rating. Some things were simple—like selecting low-VOC finishes and using recycled and rapidly renewable materials—while others, like installing a 47 kW solar array on our rooftop, were more complex undertakings.

We hope our achievement will provide inspiration to others when they undertake their next project. Thanks for visiting Chapman Headquarters!



photo © Lucy Chen

CONTRIBUTORS

Earning Platinum was a big job, but we didn't do it alone. A number of our partners helped along the way:



Acoustical Ceiling Design, Inc.
Advantage Appliance
Dal Tile

Donald P. Roberto Construction, Inc.
E.L. Harvey

Engineered Concrete Products
Excel Building Systems, Inc.

Excel Dryer
Forbo Flooring
Global Furniture
The Green Depot
Insinkerator

Joyce Contract Interiors
Mark Richey Woodworking

O'Connor Door/Kamco
Plyboo

SIGCO, Inc.
Solatube

Tremblay Brothers Flooring

Chapman Construction/Design
84 Winchester Street
Newton, MA 02461
617.630.8408 phone
www.chap-con.com

Chapman
Construction / Design

printed on recycled paper

Chapman Headquarters LEED®-CI Platinum



seeing the light



EQ 8.1/8.2/8.3 Daylight & Views
MR 4.1 Recycled Content

photo © Lucy Chen

New and enlarged windows bring daylight and outdoor views to all work areas, allowing us to greatly reduce our electrical lighting density and conserve energy. Mohawk carpet tiles used throughout the office contain recycled materials and are themselves recyclable.

smarter switching



EA 1.1/1.2 Optimize Energy Performance

Daylight and occupancy sensors throughout the office automatically switch new high-efficiency light fixtures on and off as needed.

food for thought



MR 6 Rapidly Renewable Materials
IEQ 4.2 Low-Emitting Materials; Paints and Coatings

photo © Lucy Chen

Our expanded cafe/lounge features Marmoleum tiles and agrifiber millwork made from rapidly renewable materials.

running on the sun



photo © Rick Bern

SS 1K Onsite Renewable Energy
SS 1E Heat Island Reduction
ID 1 Innovation in Design

Our 47 kW photovoltaic array generates the vast majority of Chapman's power. The array sits atop our new Firestone white roof, which lowers cooling costs by reflecting the sun's heat.

finishing strong



MR 6 Rapidly Renewable Materials
IEQ 4.2 Low-Emitting Materials; Paints and Coatings

photo © Lucy Chen

Our lobby features many sustainable finishes, including cork flooring, a Plyboo bamboo feature wall, and low-VOC paint.

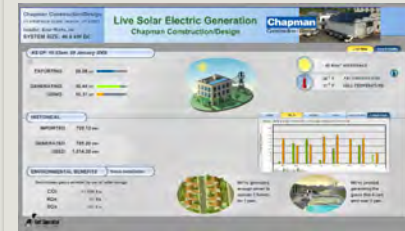
efficient fixtures



SS 1I Innovative Wastewater Technologies
WE 1.1/1.2 Water Use Reduction
ID 1 Innovation in Design

New efficient Kohler fixtures, including dual-flush toilets and waterless urinals, cut our water use drastically. Excel Dryer's XLERATOR hand dryers use less power than traditional models.

powerful data



The touchscreen computer in our lobby displays live power production data from our solar array (data also available on our website).



EQ 8.1/8.2 Daylight & Views
EA 1.1 Optimize Energy Performance

lit from above

Solatube Daylighting Systems collect light from the roof and funnel it into the office.



SS 1K Onsite Renewable Energy
ID 1 Innovation in Design

the power station

The seven inverters in this room convert DC power from our photovoltaic array to AC power and distribute it throughout the building. When we produce more power than we use, the surplus is exported back to the grid.